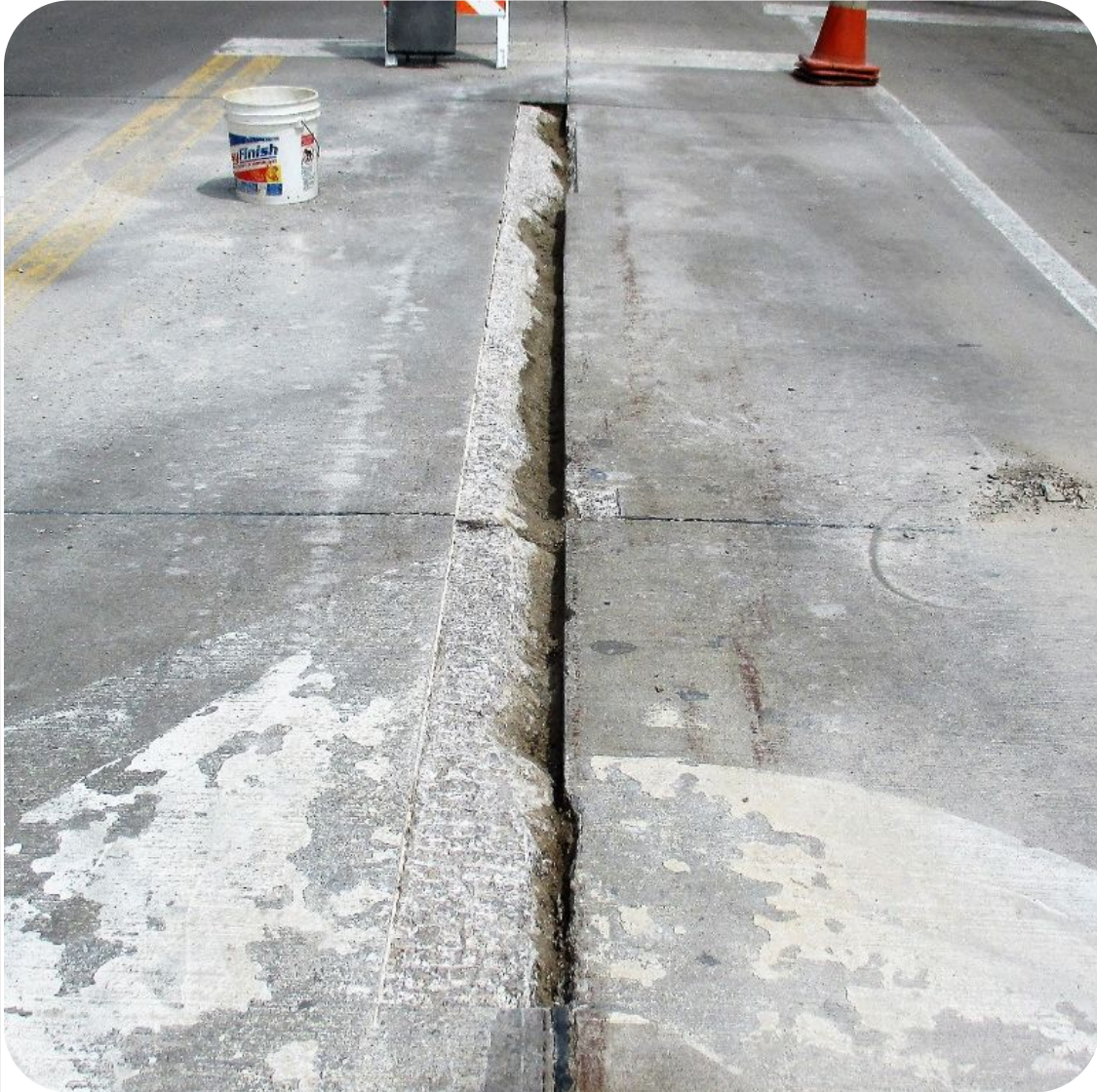


*flex*KRETE

WORLD'S BEST CONCRETE REPAIR PRODUCT

ADHESION + STRENGTH + RESILIENCE

MAKE FLEXXKRETE THE VERY BEST



Precise Patch of Ohio, repaired a crumbling, moving street joint that they hoped would last through a frigid, Lake Erie winter of ice, snow, street traffic and snow plows.

After their repair work was finished, the material would be 1/2" - 4" in depth.

Will FlexKrete also pop out of this joint?

